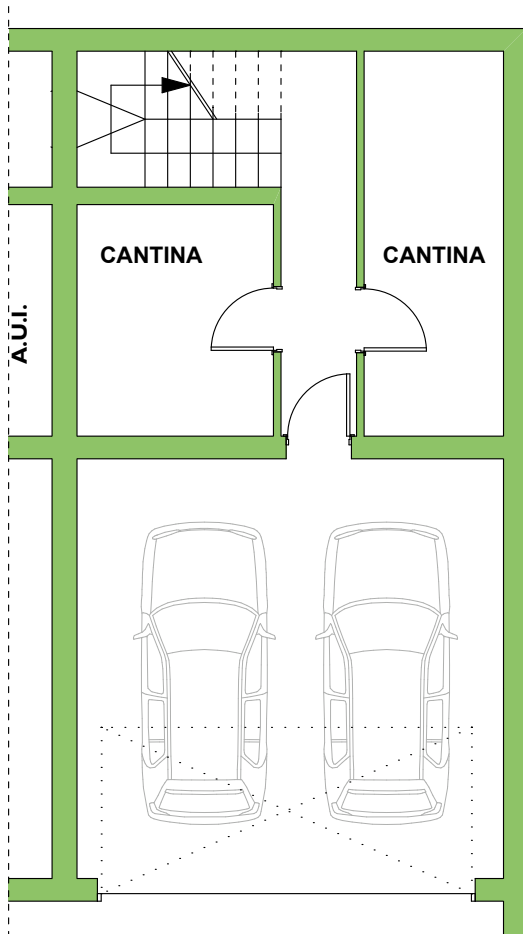


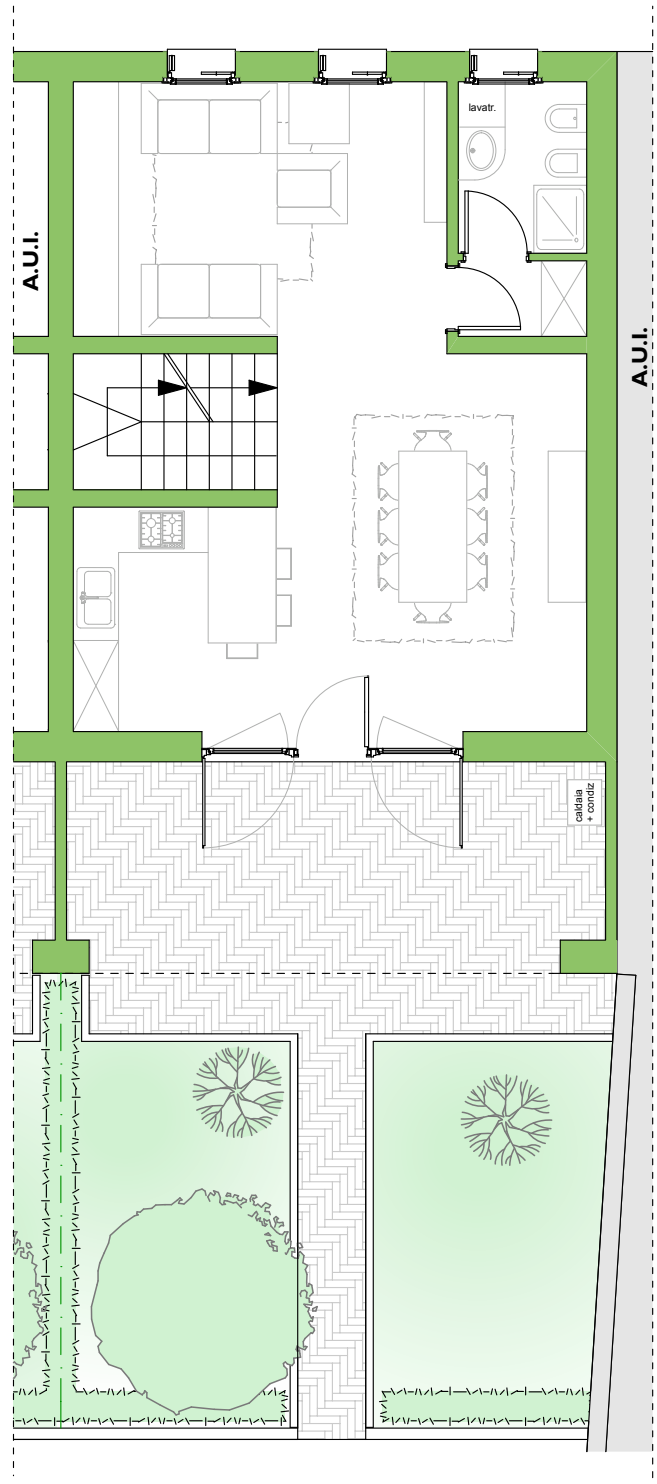
## Vicenza, strada di Costabissara

Superficie commerciale mq 203,88 + garage

**Unità D**



**PIANO INTERRATO**



**PIANO TERRA**

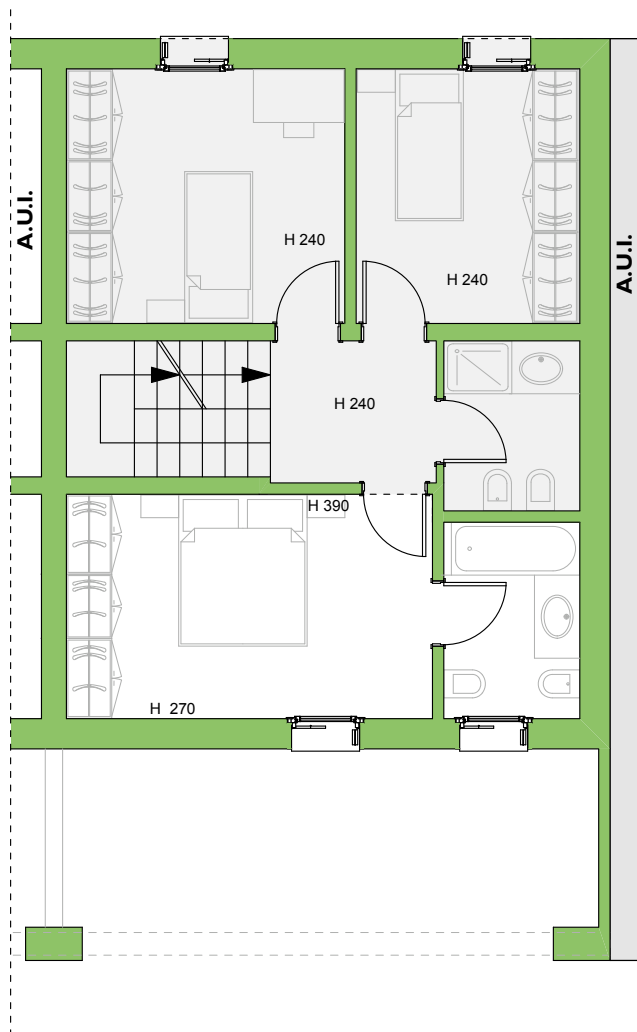


Localizzazione

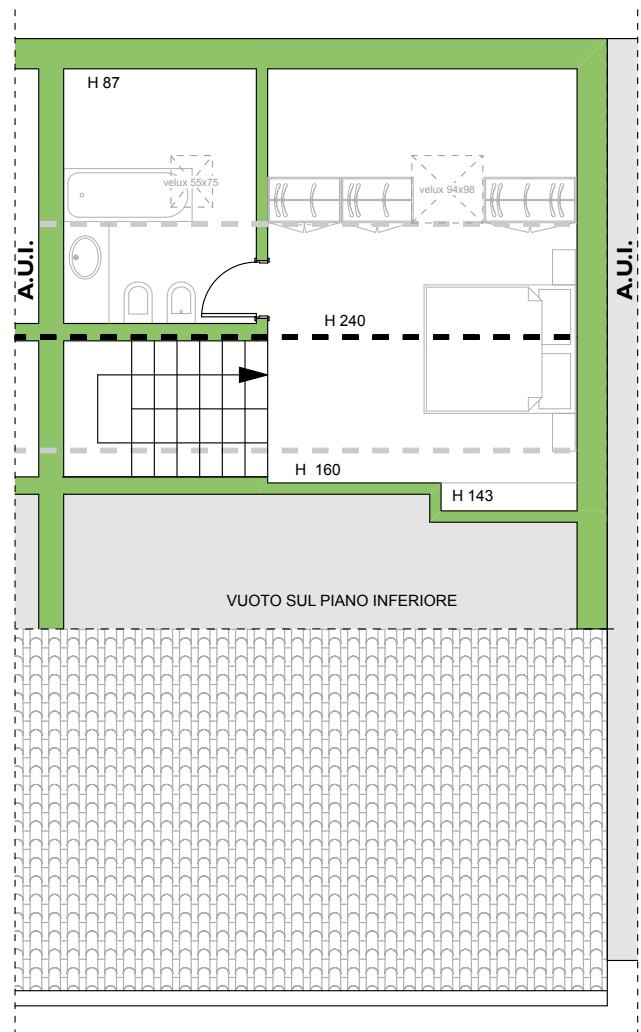
Scala disegno 1:100

## Vicenza, strada di Costabissara

### Unità D



**PIANO PRIMO**



**PIANO SOTTOTETTO**